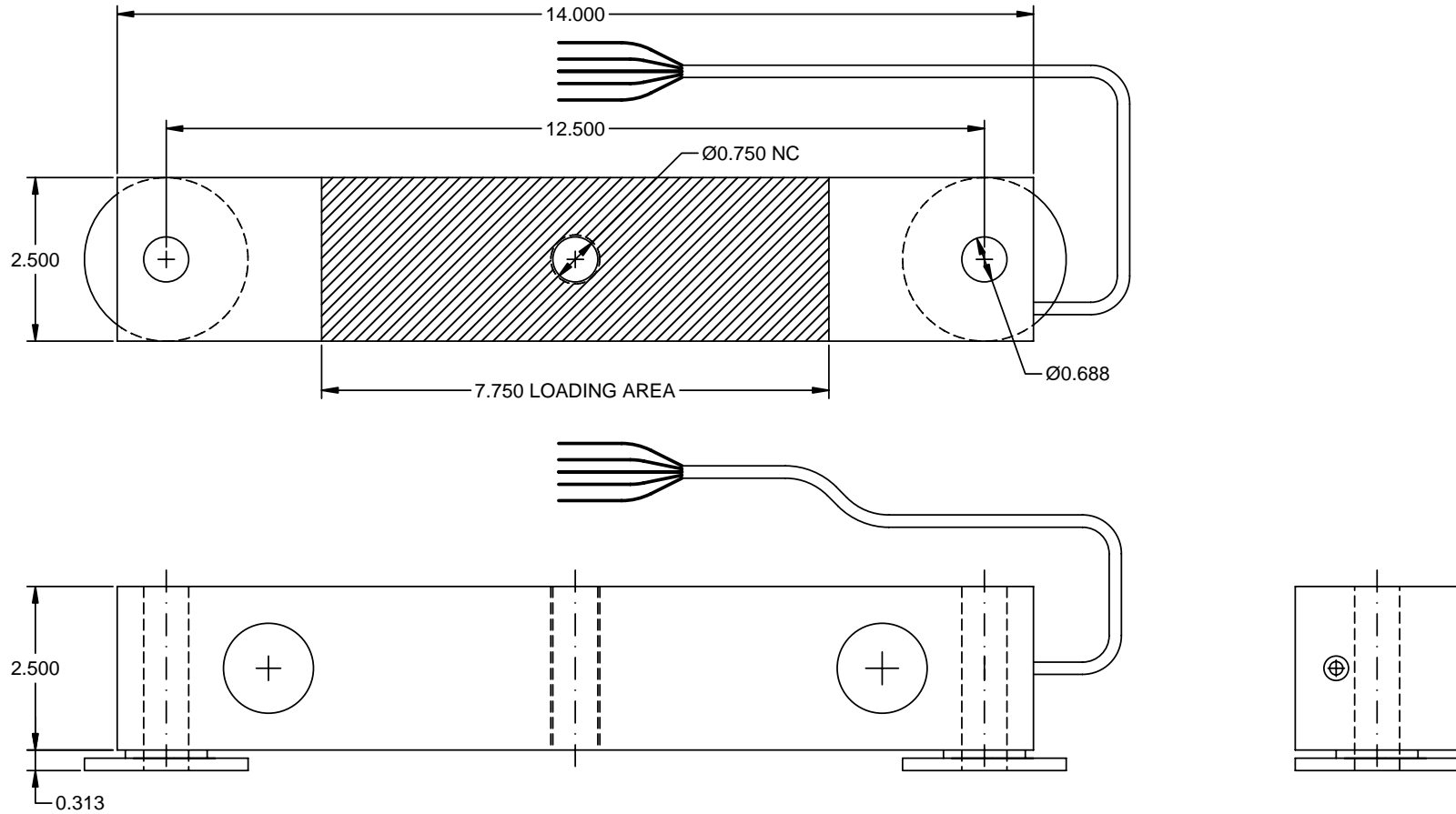


THIS DRAWING MAY NOT BE REPRODUCED IN ANY MANNER WITHOUT PERMISSION FROM RELIABLE SCALE CORPORATION



CABLE: 30 FT - 4 CONDUCTOR & SHIELD					Reliable ▲
SIGNAL: 1.5 MV/V @ RATED LOAD	BINOCULAR LOAD CELL - P TYPE - 50,000 LB - GENERAL ARRANGEMENT				
	FEB 2/04	SCALE: 3/8	DWG. NO: C10P-50K-1	REV. DATE:	0